



PICASSO LIGHTING INDUSTRIES, LLC
46 Sellers Street, Kearny, NJ 07032
201.246.8188

Indoor Distribution Test Report

Picasso Lighting Industries, LLC

46 Sellers St.
Kearny, NJ 07032

Photopia Photometric Analysis & Optical Design

Catalog Number
ELI-R-2x2-DR3-30-80-FW-W
(White Housing – Direct – Frosted Lenses)

Test Number

IES-P00125

Test Date

2017-07-05

The results contained in this report pertain only to the tested sample.
This report shall not be reproduced, except in full, without written approval of Picasso Lighting Industries, LLC.

Luminaire Description:	White, Sheet Metal Housing/Reflector, Direct w/ Frosted Acrylic Lenses
Lamp:	LED (3000K, 80+ CRI)
Installation:	Recess Mounted
Luminous Length:	22.56 in
Luminous Width:	22.56 in
Luminous Height:	0.00 in

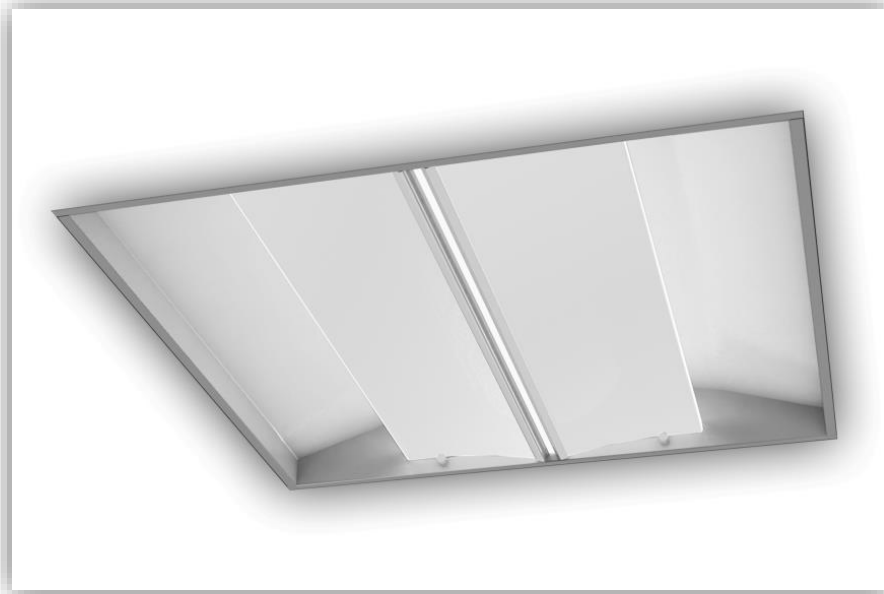


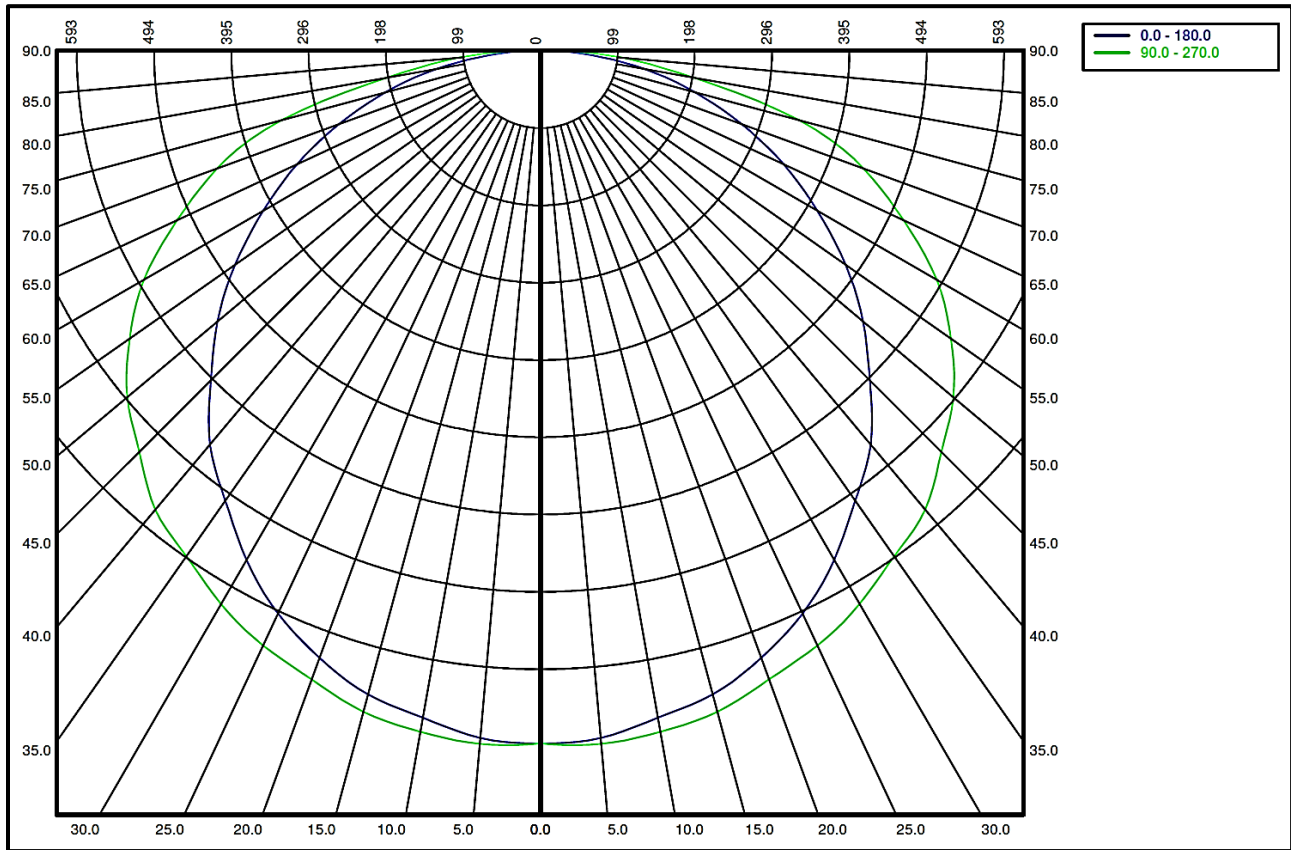
Image may differ slightly from actual unit

Summary of Results

System Power:	28.5W
Total Luminaire Output:	3003 Lumens
Luminaire Efficacy:	105 lm/W
Max Candela:	888.81 Candela

Calculated results may not be representative of field performance
Ballast factors have not been applied

Polar Plot



Zonal Lumen Summary

Zone	Lumens	% Fixture	Zone	Lumens	% Fixture
0-10	83.98	2.8%	90-100	0	0.0%
10-20	243.42	8.1%	100-110	0	0.0%
20-30	375.72	12.5%	110-120	0	0.0%
30-40	467.35	15.6%	120-130	0	0.0%
40-50	510.81	17.0%	130-140	0	0.0%
50-60	500.67	16.7%	140-150	0	0.0%
60-70	429.59	14.3%	150-160	0	0.0%
70-80	291.13	9.7%	160-170	0	0.0%
80-90	100.19	3.3%	170-180	0	0.0%
0-90	3002.86	100.0%	0-180	3002.86	100.0%

Candela Distribution

Horizontal Angle (Degrees)

	0	22.5	45	67.5	90	112.5	135	157.5	180	202.5	225	247.5	270	292.5	315	337.5
0	885	885	885	885	885	885	885	885	885	885	885	885	885	885	885	885
5	881	878	881	887	889	887	881	878	881	878	881	887	889	887	881	878
10	865	870	875	877	883	877	875	870	865	870	875	877	883	877	875	870
15	851	855	867	867	874	867	867	855	851	855	867	867	874	867	867	855
20	825	829	841	853	855	853	841	829	825	829	841	853	855	853	841	829
25	793	798	815	831	838	831	815	798	793	798	815	831	838	831	815	798
30	751	760	784	800	816	800	784	760	751	760	784	800	816	800	784	760
35	702	717	746	775	789	775	746	717	702	717	746	775	789	775	746	717
40	657	670	704	739	765	739	704	670	657	670	704	739	765	739	704	670
45	596	618	660	706	725	706	660	618	596	618	660	706	725	706	660	618
50	539	563	613	665	689	665	613	563	539	563	613	665	689	665	613	563
55	476	502	563	617	641	617	563	502	476	502	563	617	641	617	563	502
60	409	442	506	561	585	561	506	442	409	442	506	561	585	561	506	442
65	343	379	442	491	512	491	442	379	343	379	442	491	512	491	442	379
70	274	311	367	415	440	415	367	311	274	311	367	415	440	415	367	311
75	204	238	286	328	342	328	286	238	204	238	286	328	342	328	286	238
80	136	159	186	195	200	195	186	159	136	159	186	195	200	195	186	159
85	66	74	89	103	108	103	89	74	66	74	89	103	108	103	89	74
90	11	14	15	15	15	15	15	14	11	14	15	15	15	15	15	14

Average Luminance (cd/m²)

Horizontal Angle (Degrees)

ANGLES	0-Deg	45-Deg	90-Deg
0	2695	2695	2695
45	2563	2841	3119
55	2526	2985	3398
65	2471	3180	3687
75	2403	3365	4022
85	2292	3122	3755

Coefficients of Utilization – Zonal Cavity Method

Effective Floor Cavity Reflectance 20%																		
RC	80				70				50			30			10			0
RW	70	50	30	10	70	50	30	10	50	30	10	50	30	10	50	30	10	0
RCR	Values are in Lumens delivered to the Task Plane																	
0	3573	3573	3573	3573	3483	3483	3483	3483	3333	3333	3333	3183	3183	3183	3063	3063	3063	3003
1	3213	3063	2913	2793	3153	3003	2853	2733	2853	2763	2643	2733	2643	2582	2643	2552	2492	2432
2	2913	2643	2402	2222	2823	2582	2372	2192	2462	2282	2132	2372	2222	2102	2282	2162	2042	1982
3	2643	2282	2012	1802	2552	2252	1982	1802	2162	1952	1772	2072	1892	1742	1982	1832	1712	1622
4	2402	2012	1742	1501	2312	1982	1712	1501	1892	1652	1471	1832	1622	1471	1742	1592	1441	1381
5	2192	1802	1501	1291	2132	1742	1471	1291	1682	1441	1261	1622	1411	1261	1561	1381	1231	1171
6	2012	1592	1321	1111	1952	1561	1291	1111	1531	1291	1111	1471	1261	1081	1411	1231	1081	1021
7	1862	1441	1171	991	1832	1411	1171	961	1381	1141	961	1321	1111	961	1291	1111	961	901
8	1742	1321	1051	871	1682	1291	1051	871	1261	1021	871	1231	1021	841	1171	991	841	781
9	1622	1201	961	781	1592	1201	931	781	1141	931	781	1111	901	781	1081	901	751	691
10	1531	1111	871	691	1471	1081	871	691	1051	841	691	1021	841	691	1021	811	691	631

