



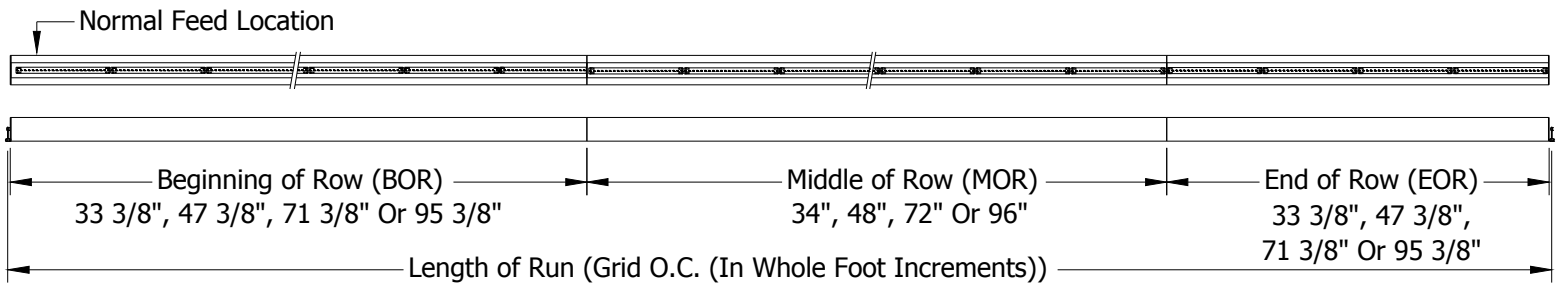
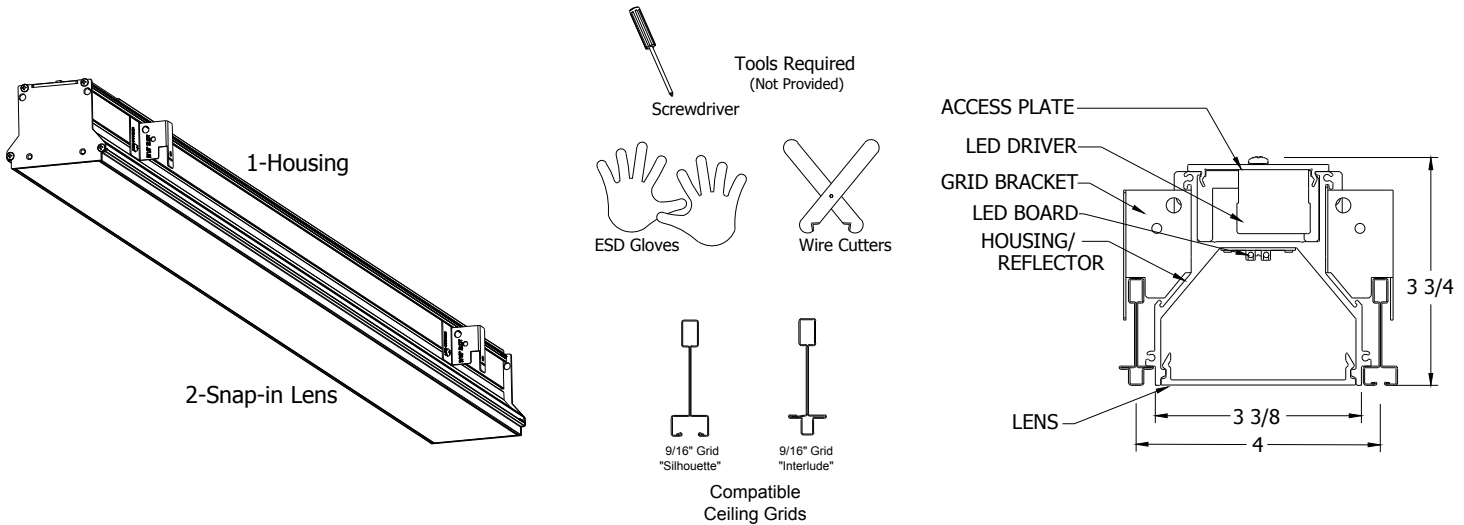
INSTALLATION PROCEDURE, CONTINUOUSLY ROWED (Sheet 1 of 3)

DO NOT DISCARD
PLEASE READ CAREFULLY BEFORE BEGINNING INSTALLATION.

Fixtures must be installed by licensed electricians in accordance with all local and national codes.

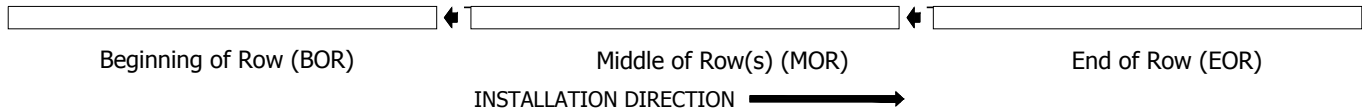
To prevent electrical shock, disconnect electrical supply before installing or servicing.

Before Beginning Installation, Locate The Following Components. Gather Required Tools.



Fixtures Provided In Nominal Lengths of 3, 4, 6 and 8 Feet.
 (Depending upon Job-Site Capacity, Fixtures Can Be Provided In Longer, One Piece Lengths (Consult Factory))

***Note:** Install in accordance with approved client drawing(s).



Service Hotline: 1-201-246-8188
Monday through Friday 9:00AM - 5:00PM



INSTALLATION PROCEDURE, CONTINUOUSLY ROWED (Sheet 2 of 3)

DO NOT DISCARD

PLEASE READ CAREFULLY BEFORE BEGINNING INSTALLATION.

Fixtures must be installed by licensed electricians in accordance with all local and national codes.

To prevent electrical shock, disconnect electrical supply before installing or servicing.

To Begin Installation:

POWER OFF

1

Carefully Lift Fixtures Into Grid Through Adjoining Grid Space.

Service Hotline: 1-201-246-8188
Monday through Friday 9:00AM - 5:00PM

2

Latch
Splicing Plates
Catch

Lift fixtures slightly off of grid. Open latch. Make Electrical Connection. Align Spicing Plates (Both Sides).

3

Engage Catch. Draw Fixtures Together and Close Latch.

4

Carefully Lower Fixtures Into Grid.

5

Entire Fixture Run Must Sit Snugly In Grid and Level With Ceiling

6

Holes For Support Rods Or Wires When Required.

Bend Tabs In Grid Clips Until Tabs Contact Grid.

7

Neutral (White) Dim + (Purple)
Ground (Green) Dim - (Grey)
Line (Black) Emergency Unswitched (Red)
Wire @ Fixture (5) or (6) wire

Remove Screws And Access Cover.
Make Connections As Required In Accordance With All Applicable Codes.

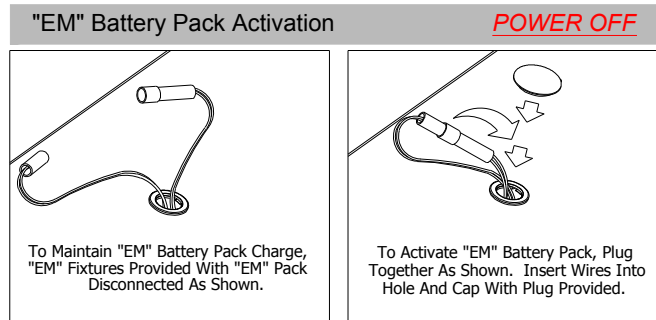
8

Access Cover
Screws

Replace Screws And Access Cover.



INSTALLATION PROCEDURE, CONTINUOUSLY ROWED (Sheet 3 of 3)



Service Hotline: 1-201-246-8188
Monday through Friday 9:00AM -
5:00PM

Installation and maintenance of the MAX4 luminaire may only be performed by qualified and licensed electricians in accordance with all applicable codes and standards.

Picasso Lighting Industries, LLC assumes no responsibility or liability for any unauthorized changes or modifications to the MAX4 luminaire. The MAX4 luminaire is not intended for outdoor use.

Picasso Lighting Industries, LLC. shall assume no responsibility or liability for the integrity of the mounting surface and structure as well as the integrity of all components not provided by Picasso Lighting Industries, LLC.

Turn off line voltage and allow luminaire to completely cool before performing any maintenance including routine cleaning of luminaire. Avoid touching LED light emitting surfaces while installing, replacing or providing maintenance to the luminaire.

Luminous flux and connected electrical load are subject to an initial tolerance of +/- 10%.

Color temperature (k) is subject to a tolerance of +/- 150k from the nominal value.

Any component contained in this luminaire can only be replaced by the manufacturer or an agent thereof.

Keep these INSTALLATION INSTRUCTIONS in a secure and readily accessible place for any future maintenance or for reference.

DO NOT DISCARD
PLEASE READ CAREFULLY BEFORE BEGINNING INSTALLATION.