



**PICASSO LIGHTING INDUSTRIES, LLC**  
46 Sellers Street, Kearny, NJ 07032  
201.246.8188

## **Indoor Distribution Test Report**

# **Picasso Lighting Industries, LLC**

46 Sellers St.  
Kearny, NJ 07032

### **Photopia Photometric Analysis & Optical Design**

#### **Catalog Number**

MX4-F-4-D7-30-80-FL-W

White Housing - Recessed - Direct - Frosted White Lens

#### **Test Number**

IES-P00118

#### **Test Date**

Thu Nov 01 13:56:19 2018

The results contained in this report pertain only to the tested sample.  
This report shall not be reproduced, except in full, without written approval of Picasso Lighting Industries, LLC.

MX4-F-4-D7-30-80-FL-W  
White Housing - Recessed - Direct - Frosted White Lens  
LED (3000K 80+ CRI)

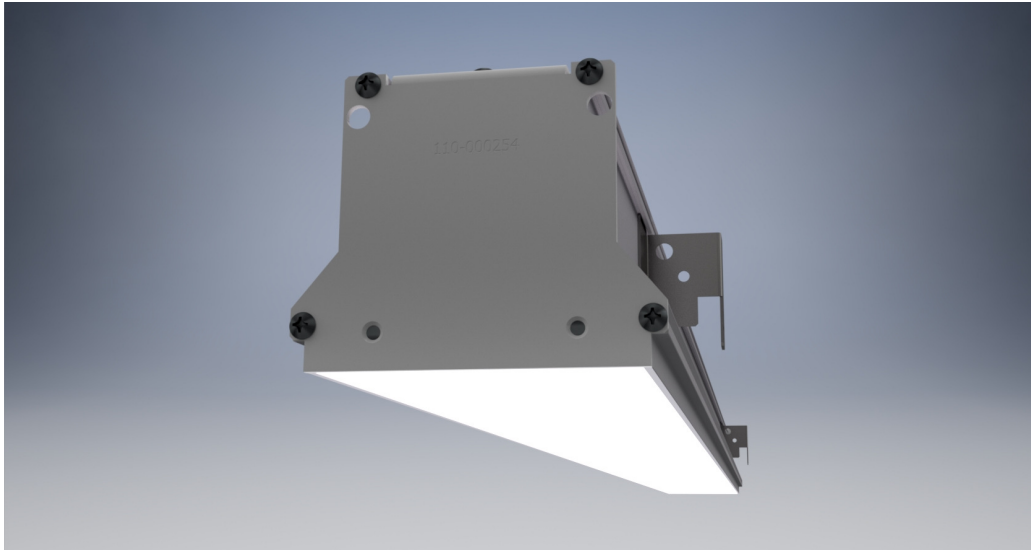


Image may differ slightly from actual unit.

### Summary of Results

#### Output:

<b>Watts:</b>	33.46 W
<b>Lumens:</b>	3,018.02 lm
<b>Efficiency:</b>	N/A
<b>Efficacy:</b>	89.77 lm/W

#### Spacing Criterion

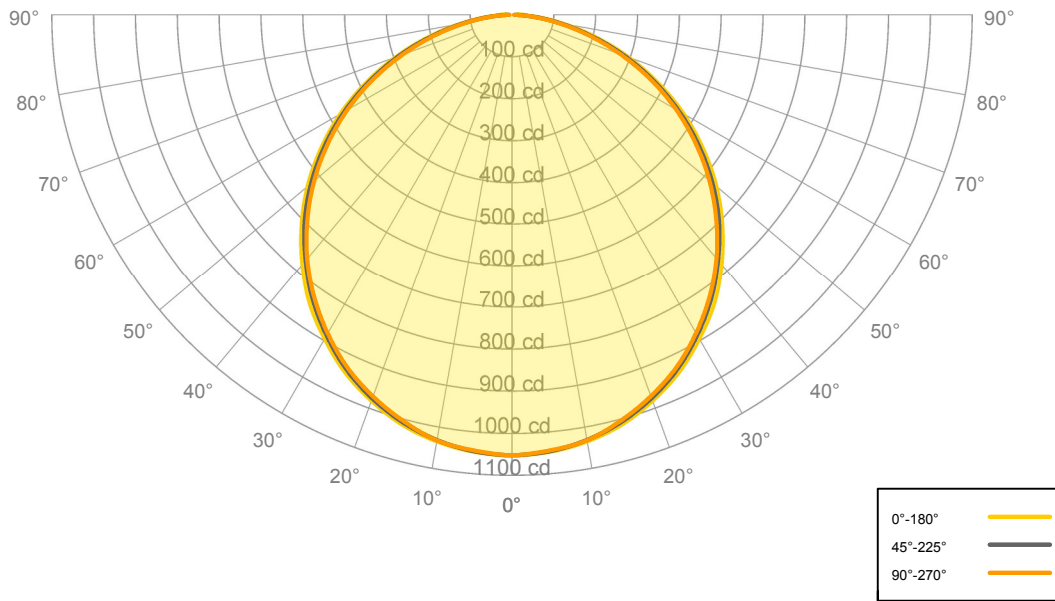
<b>Two luminaires, plane 0°</b>	1.26
<b>Two luminaires, plane 90°</b>	1.24
<b>Four luminaires</b>	1.37

#### Full Beam Angle

<b>0° - 180°</b>	113.65°
<b>90° - 270°</b>	111.22°

Calculated results may not be representative of field performance.  
Ballast factors have not been applied.

**Candela Polar Plot**



**Zonal Lumen Summary**

Zone	Lumens	% Fixture	Zone	Lumens	% Fixture
0° - 10°	119.41	3.96%	90° - 100°	2.35	0.08%
10° - 20°	283.80	9.40%	100° - 110°	0.00	0.00%
20° - 30°	429.91	14.24%	100° - 120°	0.00	0.00%
30° - 40°	518.41	17.18%	120° - 130°	0.00	0.00%
40° - 50°	538.40	17.84%	130° - 140°	0.00	0.00%
50° - 60°	486.38	16.12%	140° - 150°	0.00	0.00%
60° - 70°	369.58	12.25%	150° - 160°	0.00	0.00%
70° - 80°	210.32	6.97%	160° - 170°	0.00	0.00%
80° - 90°	61.82	2.05%	170° - 180°	0.00	0.00%
0° - 90°	3,018.02	100.00%	0° - 180°	3,018.02	100.00%



**Candela Distribution**

	0.00°	22.50°	45.00°	67.50°	90.00°
0.00°	1,053.38	1,053.38	1,053.38	1,053.38	1,053.38
5.00°	1,047.96	1,049.14	1,047.67	1,047.97	1,045.78
10.00°	1,035.09	1,034.75	1,032.58	1,033.01	1,033.30
15.00°	1,014.09	1,011.16	1,008.62	1,005.53	1,005.25
20.00°	982.02	979.01	976.07	972.79	970.97
25.00°	943.87	940.81	935.78	930.59	930.50
30.00°	895.45	892.15	885.76	882.86	880.02
35.00°	843.14	836.33	830.28	825.71	823.77
40.00°	779.43	773.52	767.05	764.22	761.41
45.00°	710.93	705.14	700.67	695.49	691.15
50.00°	637.64	631.61	626.08	618.93	616.66
55.00°	557.27	552.62	546.10	539.02	536.83
60.00°	473.56	468.46	461.69	455.15	453.75
65.00°	385.05	381.23	374.33	367.88	366.33
70.00°	295.44	292.42	286.07	279.74	276.97
75.00°	206.98	203.81	197.59	191.96	190.45
80.00°	125.46	122.48	117.09	113.11	111.39
85.00°	57.74	54.40	50.01	46.77	45.35
90.00°	15.36	10.93	7.38	5.75	5.22

**Average Luminaire Luminance [cd/m²]**

	0.00°	45.00°	90.00°
0.00°	10,825	10,825	10,825
45.00°	10,332	10,183	10,044
55.00°	9,984	9,784	9,618
65.00°	9,363	9,102	8,907
75.00°	8,218	7,845	7,562
85.00°	6,808	5,896	5,347



**Coefficients of Utilization – Zonal Cavity Method**

Values are lumens delivered to the workplane.

<b>RCR</b>	<b>pf<sub>c</sub></b>	20%	20%	20%	20%	20%	20%	20%	20%	20%	20%	20%	20%	20%	20%	20%	20%	20%	
	<b>pc<sub>c</sub></b>	80%	80%	80%	80%	70%	70%	70%	70%	50%	50%	50%	30%	30%	30%	10%	10%	10%	0%
	<b>pw</b>	70%	50%	30%	10%	70%	50%	30%	10%	50%	30%	10%	50%	30%	10%	50%	30%	10%	0%
	<b>0</b>	3,595	3,595	3,595	3,595	3,511	3,511	3,511	3,511	3,355	3,355	3,355	3,211	3,211	3,211	3,080	3,080	3,080	3,018
	<b>1</b>	3,282	3,136	3,006	2,888	3,199	3,067	2,948	2,841	2,938	2,840	2,750	2,819	2,739	2,666	2,710	2,646	2,586	2,522
	<b>2</b>	2,983	2,732	2,525	2,351	2,903	2,675	2,484	2,322	2,567	2,406	2,268	2,467	2,333	2,215	2,375	2,264	2,165	2,099
	<b>3</b>	2,719	2,399	2,151	1,954	2,644	2,351	2,121	1,936	2,260	2,063	1,901	2,176	2,008	1,867	2,098	1,956	1,835	1,768
	<b>4</b>	2,490	2,126	1,859	1,656	2,420	2,085	1,836	1,644	2,009	1,792	1,621	1,938	1,750	1,598	1,872	1,710	1,576	1,510
	<b>5</b>	2,290	1,900	1,628	1,427	2,226	1,866	1,610	1,418	1,801	1,575	1,402	1,741	1,543	1,387	1,685	1,511	1,371	1,307
	<b>6</b>	2,116	1,712	1,441	1,246	2,058	1,683	1,427	1,241	1,628	1,400	1,229	1,577	1,373	1,218	1,529	1,348	1,207	1,144
	<b>7</b>	1,963	1,554	1,288	1,102	1,910	1,529	1,277	1,098	1,482	1,255	1,089	1,438	1,234	1,081	1,397	1,213	1,073	1,012
	<b>8</b>	1,828	1,419	1,161	984	1,781	1,398	1,152	981	1,358	1,134	975	1,320	1,117	968	1,284	1,100	962	904
<b>9</b>	1,709	1,304	1,055	887	1,666	1,285	1,047	885	1,251	1,033	880	1,218	1,018	875	1,187	1,004	870	815	
<b>10</b>	1,604	1,204	965	806	1,565	1,188	959	804	1,158	946	800	1,130	934	796	1,103	923	792	739	

**Cone of Light**

Mtg Height	Light Level	0°-180° Beam Diameter	90°-270° Beam Diameter
6 ft	29 fc	18 ft	18 ft
8 ft	16 fc	24 ft	24 ft
10 ft	11 fc	30 ft	30 ft
12 ft	7 fc	36 ft	36 ft
15 ft	5 fc	45 ft	45 ft