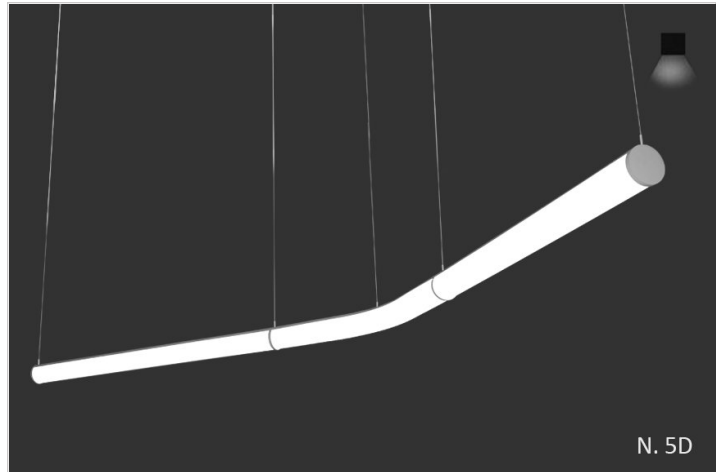


Overview

- equinox /e-qui-nox/ ekw'näks, noun 1. the time or date (twice each year) at which the sun crosses the celestial equator, when day and night are of approximately equal length (about September 22 and March 20)
- Equinox Series was originally designed to echo reception desk shapes, give direction, and create work light in an office space. After the office, Equinox Series has made its way to showcasing city transportation areas, hospital common areas and more.
- DESIGNER SELECTIONS
- Equinox Series has a 5" profile with at least 250 degrees of white acrylic.
- Equinox Series can be pendant mounted, using cables or ¼" stems.
- Glance under appropriate categories for Equinox shapes IE; Pendent Curves or Pendent Rings.
- Equinox Series is available in straight and curved runs, and also rings. Because we bend the full 5" tube, there are no seams like other manufactures. This does limit us to certain radius dimensions so please consult our factory as to the shapes you're looking to accomplish.
- Complex turns are achieved by using milled aluminum joiners.
- Equinox Series has multiple choices for canopies and colors, just scroll down for your choices. Drivers are Integral.
- Equinox Series is available in almost any CCT available in the market, we've selected the most popular, but don't let that stop you from asking for something different.
- Equinox Series qualifies as "Made in America" and "American Made", and it is also part of our ECO sustainable end of life program.
- For all: ies files, pictures, instructions, rfa files, and warranties...scroll to bottom.



Equinox Curve

PENDANT CURVES

TYPE
PROJECT

Ordering Format

PART NUMBER: EQXC-PD

Size	Lumens Direct	CCT Available	CRI Available	Direct Optics
2 = 2 Feet	D3 = 350 Lumens	27 = 2700 Kelvins	80 = 80-85 CRI	OW = Opal White
3 = 3 Feet	D5 = 500 Lumens	30 = 3000 Kelvins	90 = 90-95 CRI	
4 = 4 Feet	D7 = 750 Lumens	35 = 3500 Kelvins		
5 = 5 Feet		40 = 4000 Kelvins		
6 = 6 Feet		TW = Tunable White 2700-5000 Kelvins		
CCP = Custom Curves with stright runs, add in notes				
Mounting	Driver / Voltage	Fixture Finish	Canopy/Power Cord Color	Options
AC1R = Round 5in Canopy JBox - 5in Support	ND 1 = Non-Dim Universal 120VAC	W = Standard White	CWPW = Canopy White/Power Cord White	AWN = Lutron Athena Wireless Node (RF only)
AC1S = Square 5in Canopy JBox - 5in Support	ND 2 = Non-Dim Universal 277VAC	BK = Standard Black	CWPB = Canopy White/Power Cord Black	AWNS = Lutron Athena Wireless Node (with Sensor)
ACD1R = Round 5in Canopy JBox - 2in Support Slot Grid	ZT 1 = 0-10v dimming 120v 1%	SVR = Standard Silver	CBPB = Canopy Black/Power Cord Black	OS = Occupancy Sensor
ACD1S = Square 5in Canopy JBox - 2in Support Slot Grid	ZT 2 = 0-10v dimming 277v 1%	PA = Plated Aluminum-enter plated finish in notes	CBPW = Canopy Black/Power Cord White	EMD = Emergency Driver - Battery Backup 120-277VAC
ACD2R = Round 5in Canopy JBox - 2in Support T Grid	LE1 = Lutron EcoSystem 1% DLC EE CCR / PWM SoftOnFadeToBlack	CW = Standard Wood Finish - see wood PN # enter in notes.		IW = Inverter Wiring
ACD2S = Square 5in Canopy JBox - 2in Support T Grid	CC = Custom Control - add in notes	SW = Special pattern submitted by designer		
ACUR = Round 5in Canopy JBox - .5in Support Unistrut		AA = Anodized Aluminum -enter PN in notes section		
ACUS = Square 5in Canopy JBox - .5in Support Unistrut				
ACRR = Round 5in Canopy JBox - 2in Support 1/4 Rod				
ACRS = Square 5in Canopy JBox - 2in Support 1/4 Rod				

NOTES

ORDER NUMBER:

Construction & Mounting

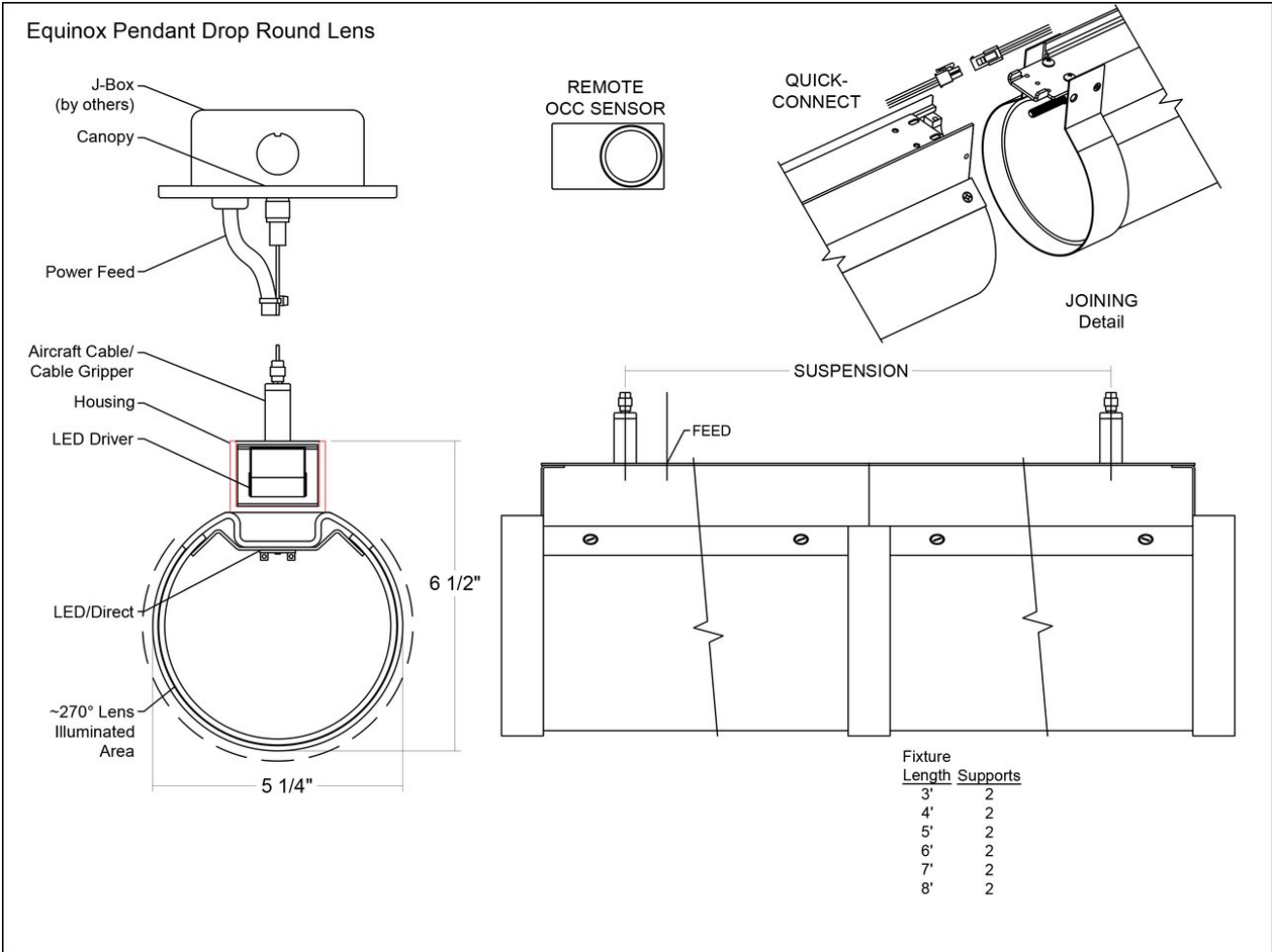
HOUSING
Extruded aluminum housings are milled to accept the 5" acrylic tube. Supplied in our standard nominal sizes up to 6 ft. (above 6' we will have a joiner) Custom sizes are also available please consult factory. Each curve can be shipped containing from 2-4 sections that are locked together with ring clamps for perfect joint connection.

REFLECTOR
Integral powder-coated LED housing with excessive reflectivity for increased lumen output

FINISH
Standard powder-coated white is optimal for this product. RAL's are available , if you can see from above the fixture.

OPTICS
Five inch tube is made of P95 type acrylic.

MOUNTING
Cable mounting with various size canopies and power feeds. Cable uses gripper style locking for field adjustments 48" standard. Canopy mounts to standard J-box and larger sizes may require Picasso re-enforced canopy. On larger rings an upper non-lighted ring may be required.



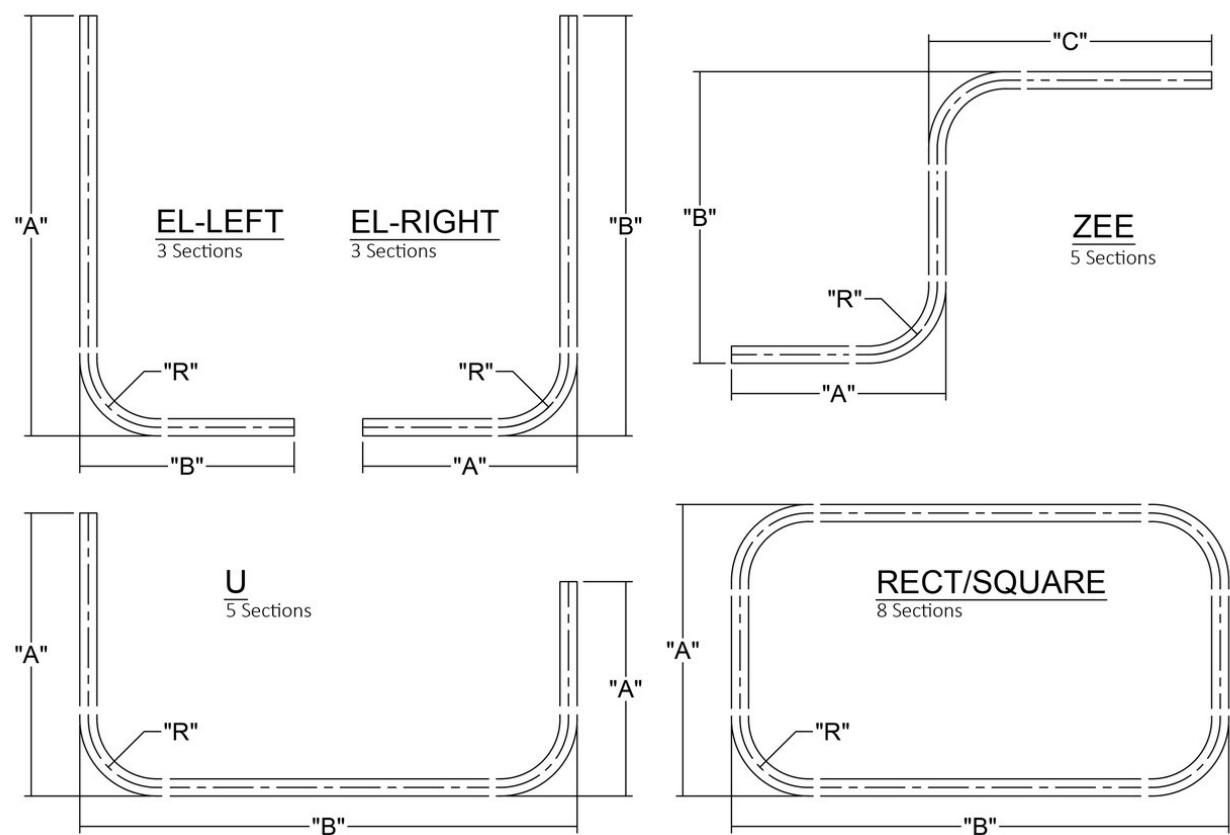
Equinox Curve

PENDANT CURVES

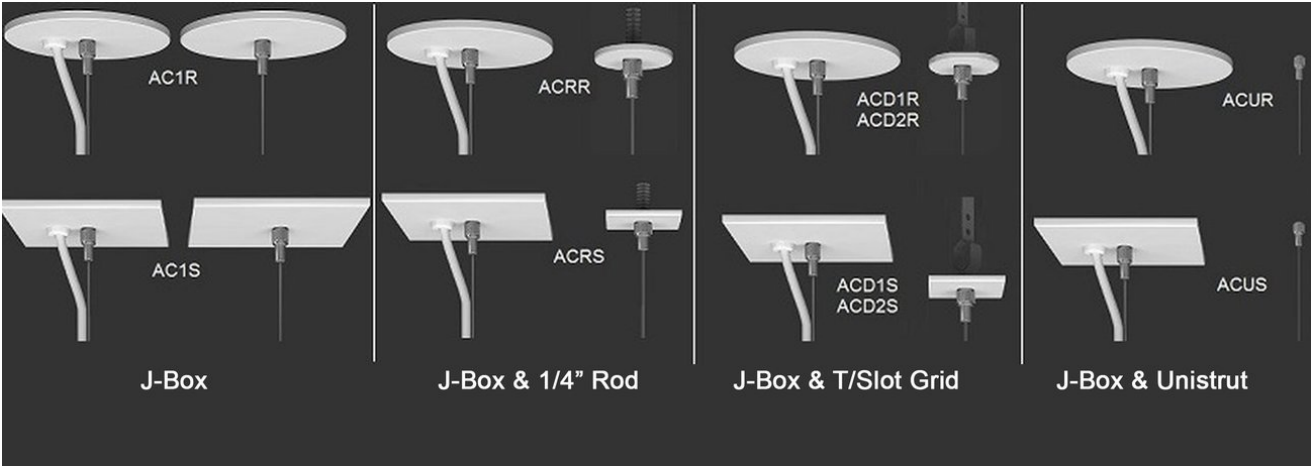
TYPE

PROJECT

PATTERNS :CONSULT FACTORY FOR RADIUS



Curved Patterns may consist of straight profiles and curved profiles or just curved profiles. All match in profile.
 If radius cannot be achieved by bending acrylic it can be done with mitered, milled joiners (Consult Factory).




Equinox Curve

PENDANT CURVES

TYPE

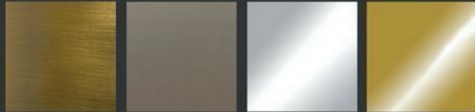
PROJECT

Standard Finishes



White W Black BK Silver SVR


Plated Aluminum



Antique Brass APAB Aged Bronze APBZ Polished Chrome APPC Polished Gold APPG


Anodized Aluminum

xxxx-B for Aluminum to be Brushed



Anodized Black AABK Anodized DK. Bronze AADB Anodized LT. Bronze AALB Anodized Champagne AALC Anodized Clear AACL

Wood Finishes



Light Bamboo LW01 Light Pine LW02

Teak LW03 Dark Bamboo LW04 Dark Cherry LW05 Brushed Chestnut LW06

Chestnut DW01 Dark Chestnut DW02 Cherry DW03 Dark Mahogany DW04

Mahogany DW05 Walnut Pine DW06 Dark Walnut Oak DW07 Consult Factory

Custom RAL - Custom finishes go to: tiger-coatings.com **Add # in Notes**

Standard Finishes – colors are powder coated and do not add to delivery lead time.

Anodized Aluminum – can be smooth or brushed, color can vary fixture to fixture and adds 2-3 weeks to lead time. Anodized finish is limited in fixture size.

Plated Aluminum – is a mirror finish in chrome and gold and adds 2 weeks to lead time.

Wood Finishes – so realistic, wood finish can add up to 3-4 weeks to lead time.

Electrical / Driver

- Drivers - Our drivers are specifically selected based on fixture application to ensure ultimate reliability and long life. We use only UL recognized brands of LED drivers. Our LED drivers feature HPF (high power factor), universal voltage 110 - 277 VAC and include 0-10V dimming. Please note, 277v has longer distances from power feed to power feed then 120v.
- If required, we can supply premium drivers such as Lutron, Eldoed and others upon request. Advanced control systems compliant drivers such as POE,DALI, DMX, etc. are also available, please consult factory.
- Rated life (90% survivorship) of 50,000 hours at 50° C max. ambient (and 70° C max. case) temperature. At maximum driver load: Efficiency >84%, PF>0.9, THD
- Our LED drivers feature HPF (high power factor), universal voltage 110 - 277 VAC and include 0-10V dimming.
- Emergency drivers are factory installed as an option, long life, high temperature, recyclable Ni-Cad battery pack with test switch and charge indicator. EMR is minimum of 90 minutes operation to meet code.
- POE - We are working with Molex/Igor POE systems. We can add a POE driver into our fixtures or remote them. Based on the fixture you select, we will notify you (or you can contact the factory) to see if we can install the P-driver or the P-driver needs to be remote. Just add POE1 in the spec and we will advise. Please keep in mind you need to specify a complete POE control system before specifying POE1.

LED Performance

LED Output	CCT Color Temp	Watts	Lumens	Lumens per Watt	CCT Multiplier
Med	3000	4.63 WPF	500 LPF	108	x

- The table above is a quick reference. When calculating loads make sure you add direct and indirect LPW to get total wattage. Please refer to photometric report for detailed information.
- Our light engines are precisely designed for optimal operation of LED assemblies.
- Our standard LED's CCT (correlated color temperature) range is 2700K to 4000K. Other CCT values are available upon request.
- We log LED bin codes for each project we supply to ensure color consistency and keep a record of those projects for future reference.
- CRI offered is 80+, and 90+ Note: on 90+ CRI use .85 multiplier
- Tunable white, warm dim and other special LED colors available.
- Custom Lumens Available
- We design our own printed circuit boards to ensure high luminescence efficiency, low thermal resistance and long-term reliable operation.
- Light engines are easily replaced.
- We use only recognized brand LED's with 3 SDCM (standard deviation color matching) with high color consistency. 2 SDCM available upon request.
- If you require a special LED manufacturer, please contact us. LED chip manufacturers used by Picasso are primarily (but not limited to) Nichia, Cree and Samsung.
- LRP - "LED Reel Program" – LED's for printed circuit boards come on reels' like old 8mm projectors and they're sold in lots just like fabric. At Picasso Lighting, we have a program where we make sure all of your reels come from the same lot for each project. This ensures excellent color consistency in large open spaces.
- LED life is rated at 50,000 hours

Certifications & Warranties

- Limited five-year (50,000 hours) warranty on all products. Limited ten-year (100,000 hours) warranty on all Lutron drivers.
- I.C. rated fixtures are available upon request.
- Chicago Plenum and IC products are available upon request.
- Warranty does not cover damage caused by transport, damage caused by using the fixture in an area it is not UL rated for, damage caused by negligence, lack of maintenance, attempts to repair by unqualified or unauthorized personnel, by using non-original accessories/parts, fixtures installed in systems without power surge protection.
- UL and CUL listed for dry and damp locations.
- IBEW USA Union All fixtures are IBEW manufactured and assembled in the USA.
- We manufacture based on approved spec sheets and submittals signed by professionals responsible. Change orders must be in writing and will delay delivery.
- Picasso Lighting must receive in writing any thought to be defective products discovered, no later than 4 weeks from delivery to; ttoledo@picassoltg.com. Picasso Lighting will send a field technician to the site to evaluate the said defective product. We do accept field repair from licensed electrical contractors but not without a written agreement signed by Picasso Lighting official. Failure to adhere to all warranty and certifications will void any recompense and the warranty.



Note: Picasso lighting industries, LLC reserves the right to make any design changes which will not affect the overall appearance or performance of the product. All ceilings to be adequately reinforced by others. All fixtures to be wired by licensed electrician only. The information contained herein is the sole property of Picasso Lighting Industries, LLC and may not be used without prior written consent of Picasso Lighting Industries, LLC. The 'USGBC member logo' is a trademark owned by the U.S. Green building council and is used by permission. The logo signifies only that Picasso

Equinox Curve

PENDANT CURVES

TYPE
PROJECT

Lighting Industries, LLC is a USGBC member; USGBC does not review, certify, or endorse the products or services offered by its members.