

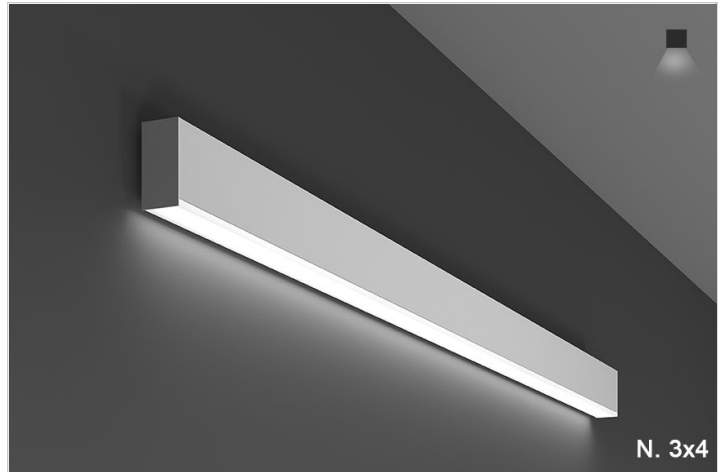
# Kayla Dropped Lens

## WALL

TYPE  
PROJECT

### Overview

- Kayla, kay-luh; a feminine name with Irish, Greek, and Hebrew roots, translating to “slender” and “fair”.
- Kayla Series is a popular luminaire for general up-lighting and down-lighting. Extremely unique when designed in brushed, clear coated aluminum.
- DESIGNER SELECTIONS
- Kayla Series has 1 profile size, four and five eighths’ inches in height, by two inches in width.
- Kayla Series is available in almost any CCT available in the market, we’ve selected the most popular, but don’t let that stop you from asking for something different.
- Kayla Series is available in direct light and direct/indirect light. We can also tune in our drivers to specific lumen output, if required.
- Kayla Series is always available for your project’s special customization needs. One example is our Custom Design for the Barclays Center! (view Kayla Flush or Custom Portfolio to see photos)
- Kayla Series qualifies as “Made in America”, “American Made” and is part of our ECO sustainable end of life program.
- Our Kayla Series is available in Pendant, Surface, and Wall. With the choice of Flush Lens or Dropped Lens
- For all: ies files, pictures, instructions, rfa files, and warranties...scroll to bottom.



# Kayla Dropped Lens

WALL

TYPE  
PROJECT

## Ordering Format

PART NUMBER: KAY-WD

Size	Lumens Direct	Lumens Indirect	CCT Available	CRI Available
<b>4</b> = 4 Feet	<b>D3</b> = 350 LPF	<b>I3</b> = 350 LPF	<b>27</b> = 2700 Kelvins	<b>80</b> = 80-85 CRI
<b>8</b> = 8 Feet	<b>D5</b> = 500 LPF	<b>I5</b> = 500 Lumens	<b>30</b> = 3000 Kelvins	<b>90</b> = 90-95 CRI
<b>CL</b> = Custom Length, add in notes	<b>D7</b> = 750 LPF <b>D10</b> = 1000 LPF	<b>I7</b> = 750 Lumens <b>I10</b> = 1000 Lumens <b>NN</b> = Not Needed	<b>35</b> = 3500 Kelvins <b>40</b> = 4000 Kelvins <b>TW</b> = Tunable White 2700-5000 Kelvins	
Direct Optics	Mounting	Driver / Voltage	Fixture Finish	Options
<b>FWD.5</b> = Frosted White Dropped 1/2 inch  <b>FWD.5/MC</b> = D-Frosted White Dropped 1/2 inch/I-Matte Clear  <b>FWD.5/BW</b> = D-Frosted White Dropped 1/2 inch/Batwing	<b>BM</b> = Bracket Mount	<b>ND 1</b> = Non-Dim Universal 120VAC  <b>ND 2</b> = Non-Dim Universal 277VAC  <b>ZT 1</b> = 0-10v dimming 120v dual 1%  <b>ZT 2</b> = 0-10v dimming 277v dual 1%  <b>CC</b> = Custom Control - add in notes  <b>LE1</b> = Lutron EcoSystem 1% DLC EE CCR / PWM SoftOnFadeToBlack	<b>W</b> = Standard White <b>BK</b> = Standard Black <b>SVR</b> = Standard Silver  <b>RAL</b> = Enter RAL or Pantone in notes  <b>CW</b> = Standard Wood Finish - see wood PN # enter in notes.  <b>SW</b> = Special pattern submitted by designer	<b>AWN</b> = Lutron Athena Wireless Node (RF only)  <b>AWNS</b> = Lutron Athena Wireless Node (with Sensor)  <b>MR</b> = MR-16 Socket LV Add detail in notes  <b>CA</b> = Custom Angle, add in notes  <b>PTW</b> = Pull Through Wiring  <b>OS</b> = Occupancy Sensor  <b>EMD</b> = Emergency Driver - Battery Backup 120-277VAC

## NOTES

ORDER NUMBER:

# Kayla Dropped Lens

WALL

TYPE  
PROJECT

## Construction & Mounting

### HOUSING

Extruded aluminum housings are supplied in nominal lengths of 4 ft.. and 8 ft.. Fixtures may be continuously rowed (contact factory for details). Internal components are constructed from min. 20 gauge die-formed steel. Easy access to driver and LED boards. End caps are extruded aluminum. Custom sizes are available.

### REFLECTOR

Integral powder-coated LED housing with excessive reflectivity for increased lumen output

### FINISH

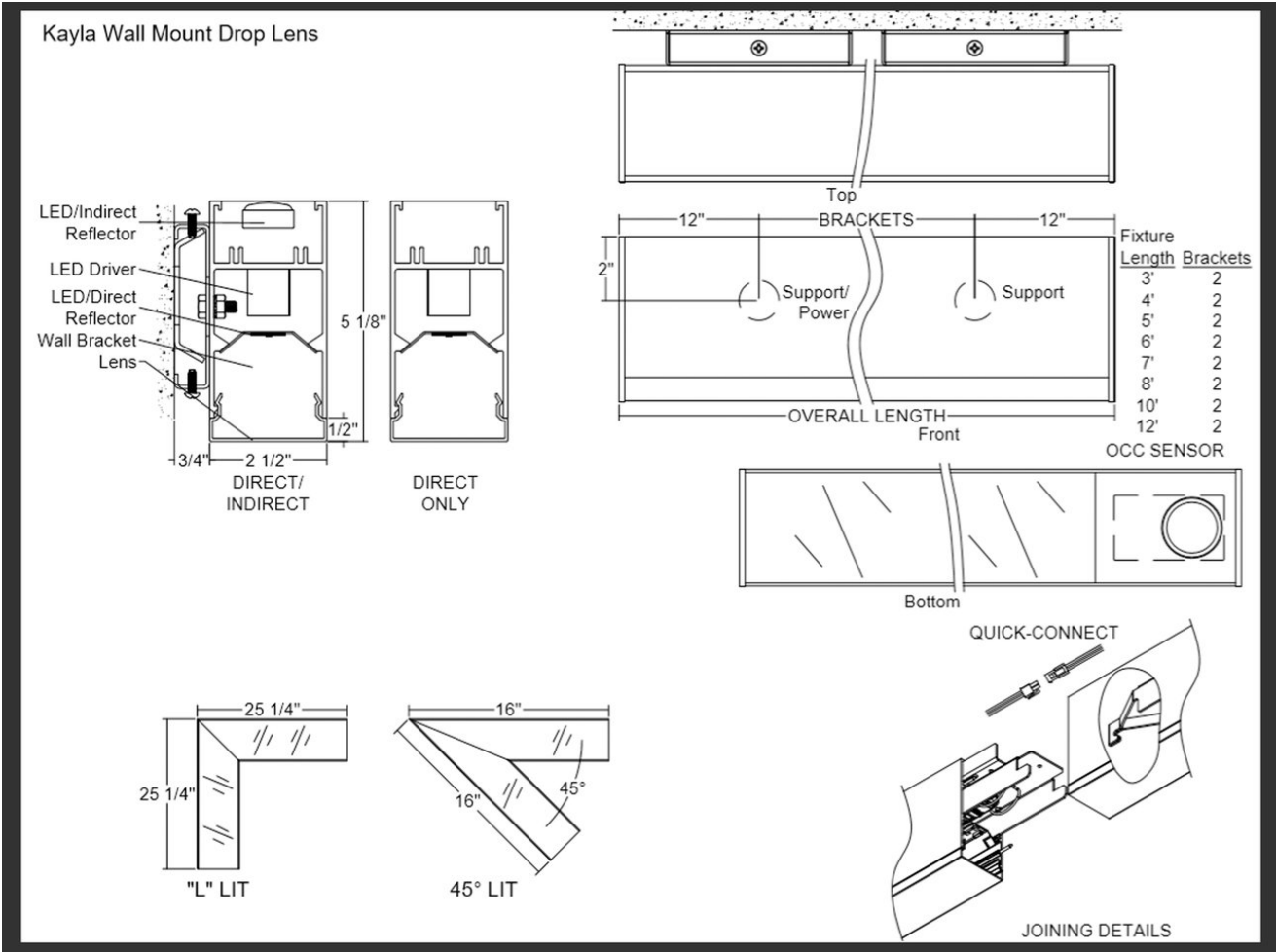
Standard powder-coated colors are white,black and silver. Custom processed wood finishes, aluminum anodized finishes, chrome/gold plating and custom finishes are available as well. We also accept RAL and Pantone numbers for powder-coating color choices.

### OPTICS

Direct component provided with an extruded snap-in frosted acrylic lens formulated for LED light sources. Indirect component LED strips are mounted in an extruded aluminum channel with an integral clear acrylic dust cover.

### MOUNTING

Mounting bracket covers J-box and fixture attaches to mounting bracket. See mounting detail drawing.




# Kayla Dropped Lens

WALL

TYPE

PROJECT

### Standard Finishes




White  
W

Black  
BK

Silver  
SVR

### Anodized Aluminum

xxxx-B for Aluminum to be Brushed




Anodized Black  
AABK

Anodized DK. Bronze  
AADB

Anodized LT. Bronze  
AALB

Anodized Champagne  
AALC

Anodized Clear  
AACL



**Custom RAL** - Custom finishes go to: [tiger-coatings.com](http://tiger-coatings.com) **Add # in Notes**


Standard Finishes – colors are powder coated and do not add to delivery lead time.

Anodized Aluminum – can be smooth or brushed, color can vary fixture to fixture and adds 2-3 weeks to lead time. Anodized finish is limited in fixture size.

Plated Aluminum – is a mirror finish in chrome and gold and adds 2 weeks to lead time.

Wood Finishes – so realistic, wood finish can add up to 3-4 weeks to lead time.

### Plated Aluminum




Antique Brass  
APAB

Aged Bronze  
APBZ

Polished Chrome  
APPC

Polished Gold  
APPG

### Wood Finishes



Light Bamboo  
LW01

Light Pine  
LW02

Teak  
LW03

Dark Bamboo  
LW04

Dark Cherry  
LW05

Brushed Chestnut  
LW06

Chestnut  
DW01

Dark Chestnut  
DW02

Cherry  
DW03

Dark Mahogany  
DW04

Mahogany  
DW05

Walnut Pine  
DW06

Dark Walnut Oak  
DW07

Consult Factory

## Electrical / Driver

- Drivers - Our drivers are specifically selected based on fixture application to ensure ultimate reliability and long life. We use only UL recognized brands of LED drivers. Our LED drivers feature HPF (high power factor), universal voltage 110 - 277 VAC and include 0-10V dimming. Please note, 277v has longer distances from power feed to power feed than 120v.
- If required, we can supply premium drivers such as Lutron, Eldoed and others upon request. Advanced control systems compliant drivers such as POE,DALI, DMX, etc. are also available, please consult factory.
- Rated life (90% survivorship) of 50,000 hours at 50° C max. ambient (and 70° C max. case) temperature. At maximum driver load: Efficiency >84%, PF>0.9, THD
- POE - We are working with Molex/Igor POE systems. We can add a POE driver into our fixtures or remote them. Based on the fixture you select, we will notify you (or you can contact the factory) to see if we can install the P-driver or the P-driver needs to be remote. Just add POE1 in the spec and we will advise. Please keep in mind you need to specify a complete POE control system before specifying POE1.
- Our LED drivers feature HPF (high power factor), universal voltage 110 - 277 VAC and include 0-10V dimming.
- Emergency drivers are factory installed as an option, long life, high temperature, recyclable Ni-Cad battery pack with test switch and charge indicator. EMR is minimum of 90 minutes operation to meet code.
- Whip - Six feet long, wiring RHOS/Reach Compliant, 18 gauge, 600v rated, Specify wired to the fixture as an OPTION.

## LED Performance

LED Output	CCT Color Temp	Watts	Lumens	Lumens per Watt	CCT Multiplier
Low	3000	WPF	LPF	00	2700 = .95
Medium	3000	WPF	LPF	00	3000 = 1
High	3000	WPF	LPF	00	3500=1.01/4000=1.03

- The table above is a quick reference. When calculating loads make sure you add direct and indirect LPW to get total wattage. Please refer to photometric report for detailed information.
- Our light engines are precisely designed for optimal operation of LED assemblies.
- Our standard LED's CCT (correlated color temperature) range is 2700K to 4000K. Other CCT values are available upon request.
- We log LED bin codes for each project we supply to ensure color consistency and keep a record of those projects for future reference.
- CRI offered is 80+, and 90+ Note: on 90+ CRI use .85 multiplier
- Tunable white, warm dim and other special LED colors available.
- Custom Lumens Available
- We design our own printed circuit boards to ensure high luminescence efficiency, low thermal resistance and long-term reliable operation.
- Light engines are easily replaced.
- We use only recognized brand LED's with 3 SDCM (standard deviation color matching) with high color consistency. 2 SDCM available upon request.
- If you require a special LED manufacturer, please contact us. LED chip manufacturers used by Picasso are primarily (but not limited to) Nichia, Cree and Samsung.
- LRP - "LED Reel Program" – LED's for printed circuit boards come on reels' like old 8mm projectors and they're sold in lots just like fabric. At Picasso Lighting, we have a program where we make sure all of your reels come from the same lot for each project. This ensures excellent color consistency in large open spaces.
- LED life is rated at 50,000 hours

## Certifications & Warranties

# Kayla Dropped Lens

## WALL

TYPE

PROJECT

- Limited five-year (50,000 hours) warranty on all products. Limited ten-year (100,000 hours) warranty on all Lutron drivers.
- DLC listed products will have DLC Logo.
- Chicago Plenum and IC products are available upon request.
- Warranty does not cover damage caused by transport, damage caused by using the fixture in an area it is not UL rated for, damage caused by negligence, lack of maintenance, attempts to repair by unqualified or unauthorized personnel, by using non-original accessories/parts, fixtures installed in systems without power surge protection.
- UL and CUL listed for dry and damp locations.
- IBEW USA Union All fixtures are IBEW manufactured and assembled in the USA.
- We manufacture based on approved spec sheets and submittals signed by professionals responsible. Change orders must be in writing and will delay delivery.
- Picasso Lighting must receive in writing any thought to be defective products discovered, no later than 4 weeks from delivery to; [ttoledo@picassoltg.com](mailto:ttoledo@picassoltg.com). Picasso Lighting will send a field technician to the site to evaluate the said defective product. We do accept field repair from licensed electrical contractors but not without a written agreement signed by Picasso Lighting official. Failure to adhere to all warranty and certifications will void any recompense and the warranty.



Note: Picasso lighting industries, LLC reserves the right to make any design changes which will not affect the overall appearance or performance of the product. All ceilings to be adequately reinforced by others. All fixtures to be wired by licensed electrician only. The information contained herein is the sole property of Picasso Lighting Industries, LLC and may not be used without prior written consent of Picasso Lighting Industries, LLC. The 'USGBC member logo' is a trademark owned by the U.S. Green building council and is used by permission. The logo signifies only that Picasso Lighting Industries, LLC is a USGBC member; USGBC does not review, certify, or endorse the products or services offered by its members.