

Kylo 3 Light Guide Lens

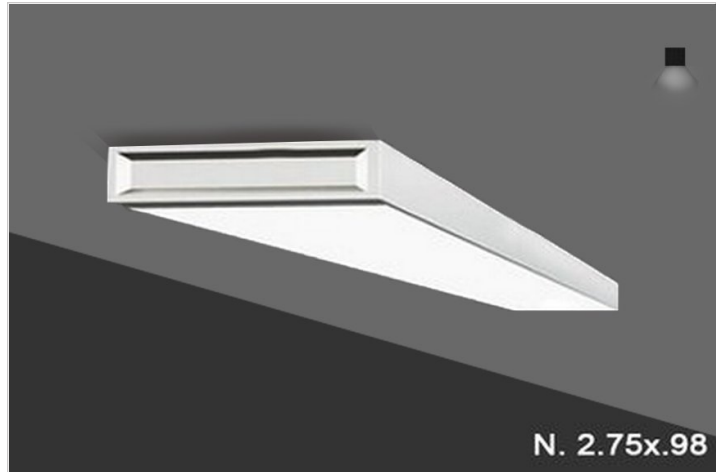
SURFACE

TYPE

PROJECT

Overview

- ky-lo noun: kylo; meaning: Sky or heavenly. Can also be a gender-neutral name of Latin or American origin. Could also be Han Solo's son from Star Wars.
- Kylo Series was designed for the minimalist when illuminating a space because of its small profile and clean sleek light guided light source.
- DESIGNER SELECTIONS
- Kylo Series has 2 profile sizes, nominally: one inch by two and three quarters of an inch, and one inch by five and one forth of an inch.
- Kylo Series has a multitude of lens/louver/baffle options, up and down on pendants and down on surface.
- Kylo Series has multiple choices for canopies and colors, just scroll down for your choices.
- Kylo Series is available in almost any CCT available in the market, we've selected the most popular, but don't let that stop you from asking for something different.
- Kylo Series has options of pendant, surface (or task) mounting options, all with a wide selection of remote drivers IE; remote, surface. We can also tune in our drivers to a specific lumen output if required.
- Kylo Series is always available for your project's special customization needs, please contact your agent.
- Kylo Series qualifies as "Made in America", "American Made" and is part of our ECO sustainable end of life program.
- For all: ies files, pictures, instructions, rfa files, and warranties...scroll to bottom.



Kylo 3 Light Guide Lens

SURFACE

TYPE
PROJECT

Ordering Format

PART NUMBER: KYL3-SF

Size	Lumens Direct	CCT Available	CRI Available	Direct Optics
2 = 2 Feet	D3 = 350 LPF	27 = 2700 Kelvins	80 = 80-85 CRI	DLW = Lambertian White Lens
4 = 4 Feet	D5 = 500 LPF	30 = 3000 Kelvins	90 = 90-95 CRI	DBW65 = Batwing 65 Degree Beam
6 = 6 Feet	D7 = 750 LPF	35 = 3500 Kelvins		DA5025 = Asymmetric 50 Degree Beam @25 Degree Tilt
8 = 8 Feet	D10 = 1000 LPF	40 = 4000 Kelvins		
CL = Custom Length, add in notes		TW = Tunable White 2700-5000 Kelvins		
Mounting	Driver / Voltage	Fixture Finish	Options	
SM = Surface Mount Clips Gyp	RND 1 = Remote Non-Dim Universal 120VAC	W = Standard White	AWN = Lutron Athena Wireless Node (RF only)	
SS = Slot Clip	RND 2 = Remote Non-Dim Universal 277VAC	BK = Standard Black	AWNS = Lutron Athena Wireless Node (with Sensor)	
ST1 = Flat T-Bar Clip 9/16	RZT 1 = Remote 0-10v dimming 120v dual 1%	SVR = Standard Silver	CA = Custom Angle, add in notes	
ST2 = Flat T-Bar Clip 15/16	RZT 2 = Remote 0-10v dimming 277v dual 1%	RAL = Enter RAL # in notes section	OS = Occupancy Sensor	
ST2 = Flat T-Bar Clip 15/16	RLE1 = Remote Lutron EcoSystem 1% DLC EE CCR / PWM SoftOnFadeToBlack	PA = Plated Aluminum-enter plated finish in notes	REMD = Remote Emergency Driver - Battery Backup 120-277VAC	
	RCC = Remote Custom Control - add in notes	CW = Standard Wood Finish - see wood PN # enter in notes.	2C = 2 Circuits	
		SW = Special pattern submitted by designer		
		AA = Anodized Aluminum -enter PN in notes section		

NOTES

ORDER NUMBER:

Kylo 3 Light Guide Lens

SURFACE

TYPE
PROJECT

Construction & Mounting

HOUSING
Extruded aluminum housings are supplied in nominal lengths of 2 ft- 8 ft. Fixtures may be continuously rowed (contact factory for details). Easy access to remote driver and LED boards. End caps are extruded aluminum.

REFLECTOR
Integral SmartOptics® reflector inside LED housing with excessive reflectivity for increased lumen output.

FINISH
Standard powder-coated colors are white, black and silver. Custom processed wood finishes, aluminum anodized finishes, chrome/gold plating and custom finishes are available as well. We also accept RAL and Pantone numbers for powder-coating color choices.

OPTICS
Downlight SmartOptics® inside consists of a three-layer light guide that provides even illumination.

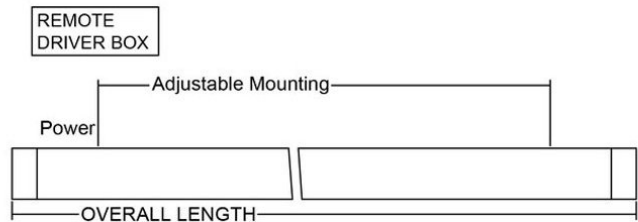
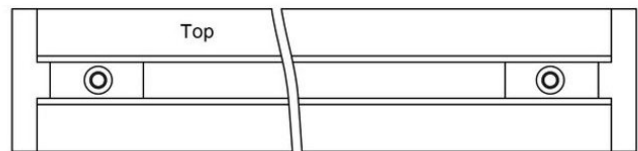
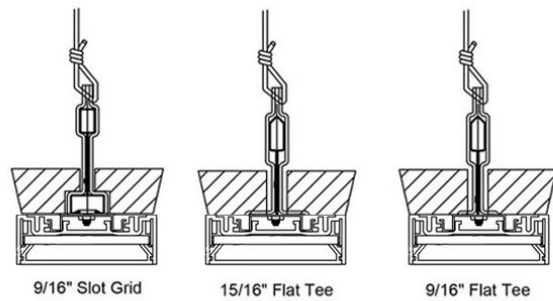
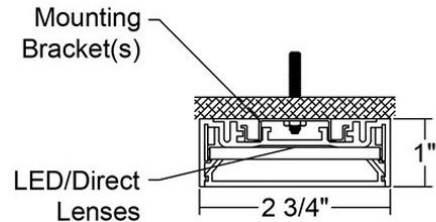
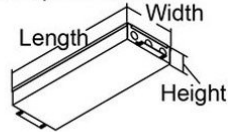
MOUNTING
Kylo is surface mounted with clips that are screwed into the surface. The body of the fixture is then snapped into the clips.

LABELING
UL Approved IBEW Union Made

Kylo 3 (Remote Driver)

REMOTE DRIVER ENCLOSURE

Size Varies based upon Drivers



Nominal Length	Mounting
3'	2
4'	2
5'	2
6'	2
7'	2
8'	3
10'	3



Kylo 3 Light Guide Lens

SURFACE

TYPE
PROJECT

Standard Finishes

White
W

Black
B

Silver
SVR

Plated Aluminum - Premium Finishes

Antique Brass
PAAB

Polished Chrome
PAPC

Polished Gold
PAPG

Anodized Aluminum - Premium Finishes

xxxx-B for Aluminum to be Brushed

Anodized Black
AABK

Anodized DK.
Bronze
AADB

Anodized LT.
Bronze
AALB

Anodized Champagne
AALC

Anodized Clear
AACL

Wood - Premium Finishes

LW01

LW02

LW03

LW04

LW07

LW08

DW02

DW07

DW08

DW09

DW10

DW11

DW12

Consult Factory

Custom RAL - Custom finishes go to: tiger-coatings.com Add 8 to Notes

Standard Finishes - colors are powder coated and do not add to delivery lead time.

Anodized Aluminum - can be smooth or brushed, color can vary fixture to fixture and adds 4-5 weeks to lead time. Anodized finish is limited in fixture size.

Plated Aluminum - is a mirror finish in chrome and gold and adds 4-5 weeks to lead time.

Woods Finishes - so realistic, wood finish can add up to 4-5 weeks to lead time.

Electrical / Driver

- Drivers - Our drivers are specifically selected based on fixture application to ensure ultimate reliability and long life. We use only UL recognized brands of LED drivers. Our LED drivers feature HPF (high power factor), universal voltage 110 - 277 VAC and include 0-10V dimming. Please note, 277v has longer distances from power feed to power feed then 120v.
- If required, we can supply premium drivers such as Lutron, Eldoled and others upon request. Advanced control systems compliant drivers such as POE, DALI, DMX, etc. are also available, please consult factory.
- Rated life (90% survivorship) of 50,000 hours at 50° C max. ambient (and 70° C max. case) temperature. At maximum driver load: Efficiency >84%, PF>0.9, THD
- Our LED drivers feature HPF (high power factor), universal voltage 110 - 277 VAC and include 0-10V dimming.
- Remote emergency drivers are an option, long life, high temperature, recyclable Ni-Cad battery pack with test switch and charge indicator. EMR is a minimum of 90 minutes operation to meet code.
- POE - We are working with Molex/Igor POE systems. We can add a POE driver into our fixtures or remote them. Based on the fixture you select, we will notify you (or you can contact the factory) to see if we can install the P-driver or the P-driver needs to be remote. Just add POE1 in the spec and we will advise. Please keep in mind you need to specify a complete POE control system before specifying POE1.

LED Performance

LED Output	CCT Color Temp	Watts	Lumens	Lumens per Watt	CCT Multiplier
Low	3000	2.8 WPF	350 LPF	129 LPW	$2700 = 1.07 / 3000 = 1 / 3500 = .97 / 4000 = .93$
Medium	3000	4.1 WPF	500 LPF	126 LPW	$2700 = 1.07 / 3000 = 1 / 3500 = .97 / 4000 = .93$
High	3000	6.3 WPF	750 LPF	122 LPW	$2700 = 1.07 / 3000 = 1 / 3500 = .97 / 4000 = .93$
Very High	3000	8.6 WPF	1000 LPF	119 LPW	$2700 = 1.07 / 3000 = 1 / 3500 = .97 / 4000 = .93$

- The table above is a quick reference. When calculating loads make sure you add direct and indirect LPW to get total wattage. Please refer to photometric report for detailed information.
- Our light engines are precisely designed for optimal operation of LED assemblies.
- Our standard LED's CCT (correlated color temperature) range is 2700K to 4000K. Other CCT values are available upon request.
- We log LED bin codes for each project we supply to ensure color consistency and keep a record of those projects for future reference.
- CRI offered is 80+, and 90+ Note: on 90+ CRI use .85 multiplier
- Tunable white, warm dim and other special LED colors available.
- Custom Lumens Available
- We design our own printed circuit boards to ensure high luminescence efficiency, low thermal resistance and long-term reliable operation.
- Light engines are easily replaced.
- We use only recognized brand LED's with 3 SDCM (standard deviation color matching) with high color consistency. 2 SDCM available upon request.
- If you require a special LED manufacturer, please contact us. LED chip manufacturers used by Picasso are primarily (but not limited to) Nichia, Cree and Samsung.
- LRP - "LED Reel Program" – LED's for printed circuit boards come on reels' like old 8mm projectors and they're sold in lots just like fabric. At Picasso Lighting, we have a program where we make sure all of your reels come from the same lot for each project. This ensures excellent color consistency in large open spaces.
- LED life is rated at 50,000 hours

Certifications & Warranties

- Limited five-year limited warranty on all products that are installed according to the product's specifications. Fixture must be properly installed by qualified licensed electricians, who meet and understand local installation requirements. Proper ambient conditions are to be met. The normal indoor temperatures of 50-90 degrees F, no more than 95% RH and sufficient air flow are required. Fixture should not be modified, and no maintenance or repairs should be performed without the written authorization from Picasso Lighting.
- We manufacture based on approved spec sheets and submittals signed by the customers. Change orders must be in writing and will delay delivery.
- Picasso Lighting reserves the right to repair or replace a defective product with another product with a similar design and the same or better performance, or to refund the distributor for the purchase price. The costs of labor to replace luminaires are not covered.
- Warranty does not cover damage caused by transportation, damage caused by using the fixture in an area it is not UL rated for, damage caused by negligence, lack of maintenance, attempts to repair by unqualified or unauthorized personnel, by using non-original accessories/parts, fixtures installed in systems without power surge protection.
- Picasso Lighting must receive in writing any complaints regarding the defective products, no later than 3 weeks from delivery addressed to: ttoledo@picassoltg.com. Picasso Lighting will send a field technician to the site to evaluate the said defective product or may require product to be sent back to the factory for repair. The customer is responsible for the costs of disassembly and reassembly. We do accept field repairs and replacement labor from licensed electrical contractors but not without a written agreement signed by Picasso Lighting official. Failure to adhere to all warranty and certifications will void any recompense and the warranty.
- IBEW USA Union All fixtures are IBEW manufactured

Kylo 3 Light Guide Lens

SURFACE

TYPE

PROJECT

and assembled in the USA. UL listed for dry and damp locations.



Note: Picasso lighting industries, LLC reserves the right to make any design changes which will not affect the overall appearance or performance of the product. All ceilings to be adequately reinforced by others. All fixtures to be wired by licensed electrician only. The information contained herein is the sole property of Picasso Lighting Industries, LLC and may not be used without prior written consent of Picasso Lighting Industries, LLC. The 'USGBC member logo' is a trademark owned by the U.S. Green building council and is used by permission. The logo signifies only that Picasso Lighting Industries, LLC is a USGBC member; USGBC does not review, certify, or endorse the products or services offered by its members.